

WisTAF Report--Appendix U

WisTAF Operating Costs

From WisTAF Audited Statements

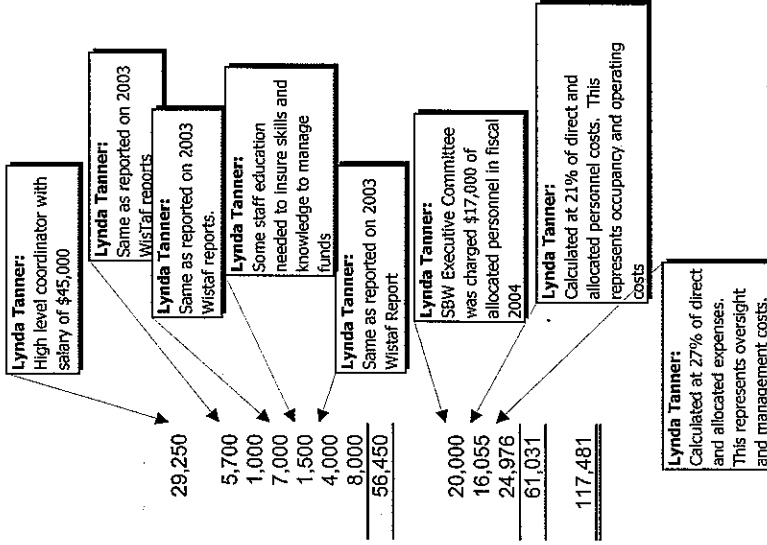
Year	Operating Costs
2000	235,210
2001	235,970
2002*	290,668
2003	235,537
Average for 12 month periods	221,641

*18 month period

Estimated Costs At SBW

Direct Expenses
Half-time Staff Person to administer Grants, etc. Includes payroll tax & benefits at 30%
Board Meetings (1 required by current bylaws) 3/year w/15 members
Supplies, Printing, etc.
Professional Services
Training & Conferences
Bank Charges
Marketing
Total Direct Expenses
Allocated Expenses
Other Allocated Personnel
Allocated Overhead
Governance & Administration Costs
Total Allocated Expenses

Total Expenses



WisTAF Report--Appendix U

	Per Meeting Max
Teleconference	500
Printing	200
Reimbursements	1200
	1900

Details Reported on 2003 WisTAF report:

Personnel	168,792
Occupancy	20,347
Office Expense	7,238
Telephone	2,842
Board	5,544
Training & Conferences	580
Professional Services (most likely audit)	7,700
Equipment Maintenance	5,058
Bank Charges	4,673
Public Relations	4,548
Insurance	2,342
Depreciation	2,902
Other	2,971
	<u>235,537</u>